

OFF GRID SOLAR SYSTEM

220-240Vac

1

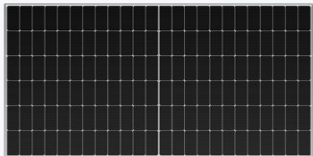
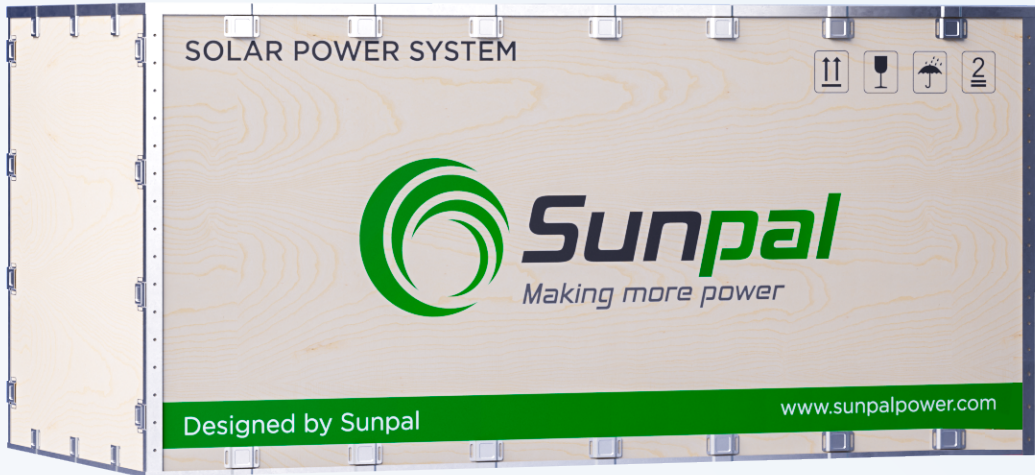
EU Voltage

SP10KW-OFF GRID



SOLAR SYSTEM KIT

SP10KW-OFF GRID



Solar Panel



Lithium Battery



Solar Inverter



Wifi Monitor



PV Cable



MC4 Connector



Mounting Bracket

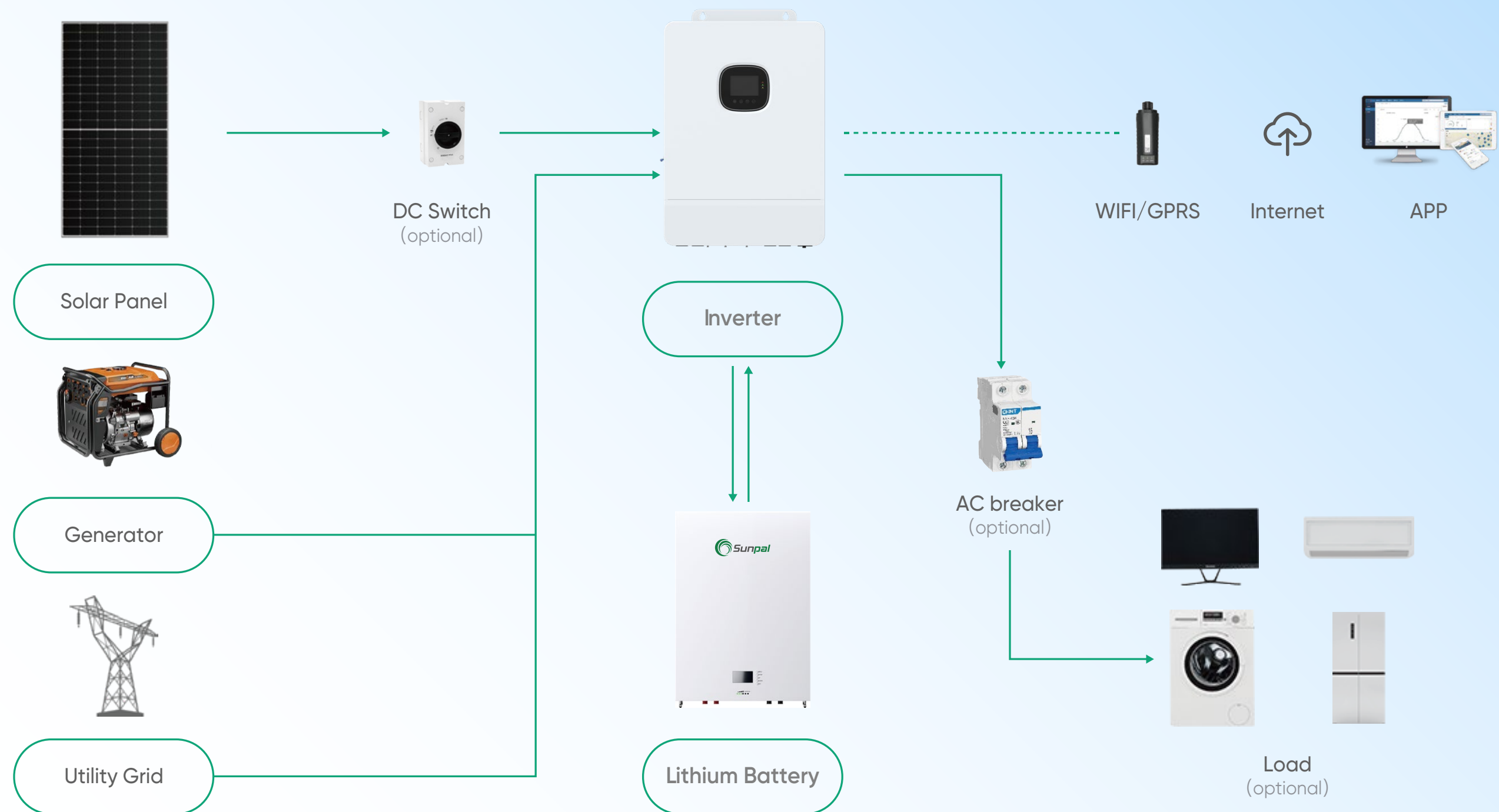


DC Switch/AC Breaker
(Optional)

SP10KW -OFF GRID

Residential Off Grid Solar System

1 EU Voltage



HiMAX 5N

MONO-CRYSTALLINE SILICON 585W

N-type TOPCon BIFACIAL DOUBLE GLASS Solar Module

- Positive power tolerance (0~+5W) guaranteed
- Reduced resistive loss with lower operating current
- Higher energy yield with lower operating current
- Reduced hot spot risk with optimized electrical design and lower operating current

STC

Testing Condition

52.03V

Open Circuit Voltage(Voc/V)

14.36A

Short Circuit Current(Isc/A)

42.86V

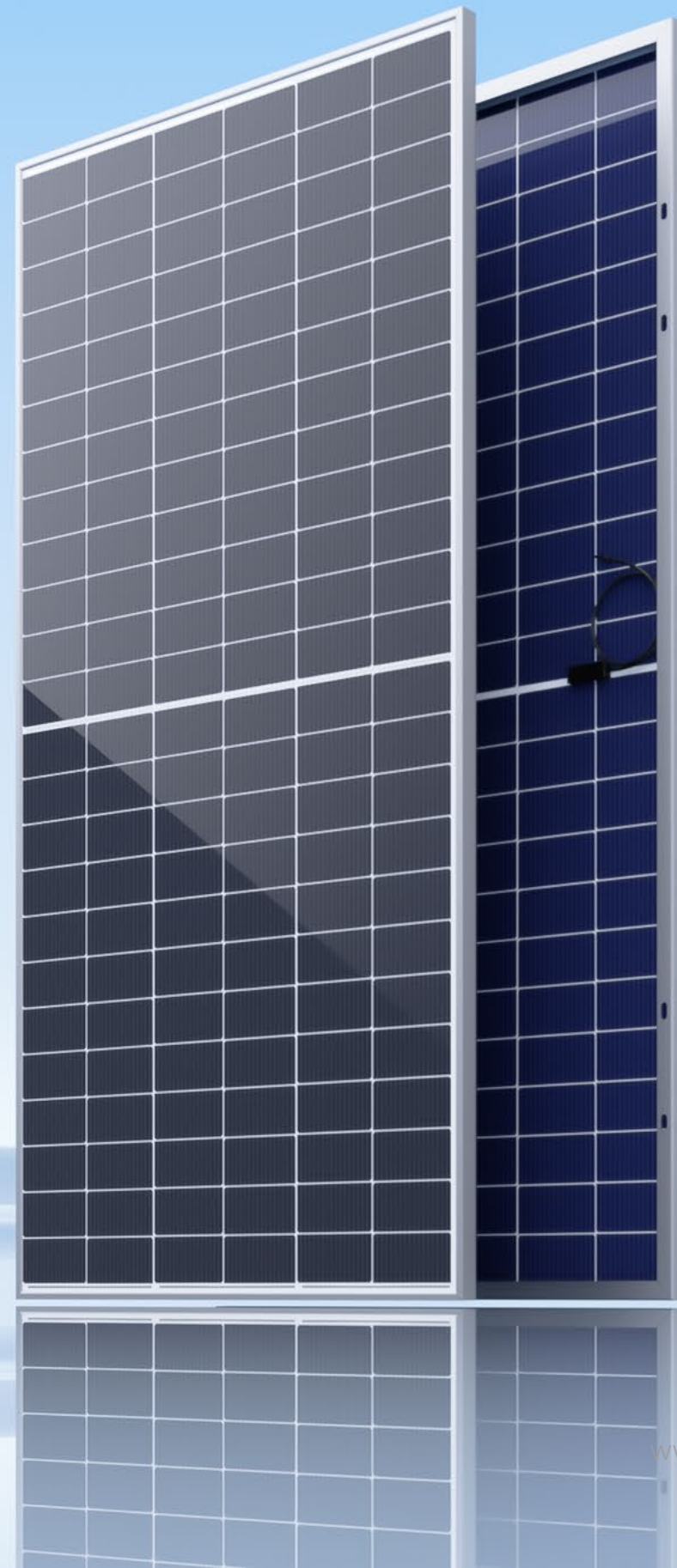
Voltage at Maximum Power(Vmp/V)

13.65A

Current at Maximum Power(Imp/A)

22.64%

Module Efficiency (%)



48V 200AH

WALL-MOUNTED LiFePO4 BATTERY

200Ah

Nominal Capacity

100A

Max.Discharging Current

48V

Nominal Voltage

100A

Max.Charging Current



Long Life And Safety

6000 cycles with 80% DOD, high - quality prismatic battery cell



Intelligent

With independent smart BMS system, manages power output effectively



Compatibility

Compatible with most of the available Hybrid inverters



Backup Protection

Stores energy, detects outages and automatically becomes energy source



Plug In And Play

Plug in batteries then working, easy to install and set up



Safety Cert

UL1642, IEC62619, CE, UN38.3, MSDS



SPI-10K-SP

Solar Inverter

- Advanced MPPT with up to 99.9% efficiency
- Up to 6 units in parallel connection
- Easy to install and simple to use
- Supports Li-ion battery BMS communication

10000W

Rated Output Power

50Hz/60Hz

Rated Output Frequency

2

No. of MPPT

220-240Vac

Rated Output Voltage

125-425Vdc

MPPT Voltage Range:

48Vdc

Rated Battery Voltage



DC CABLE

Single-core PV Cable

- Product name: H1Z2Z2-K
- Size: 1×4mm²
- Standard Basis EN50618:2014



1000VDC

30A

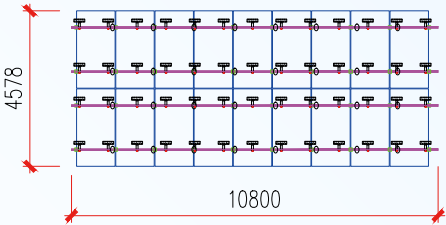
MC4 Connector

- Style: Photovoltaic Connector
- Size: PV005
- Standard Basis IEC 62852: 2014



PV MODULES INSTALL

10KW

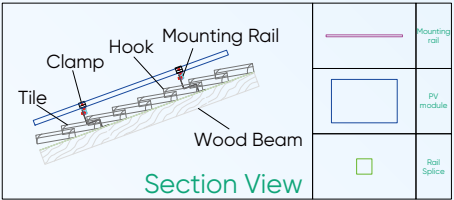


Description:

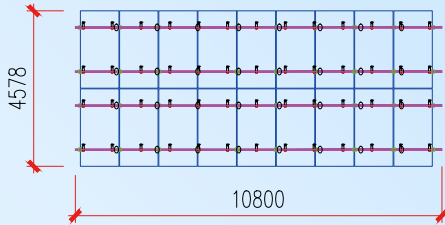
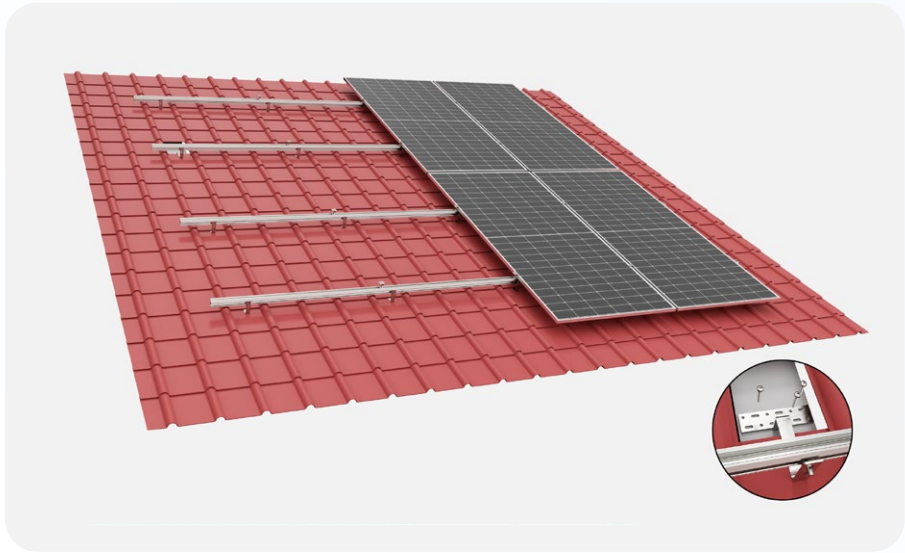
Installation area: Glazed tile roof
Mounting form: Glazed tile roof installation
Installation Quantity: 18 pieces

Dual rows of 18 modules in one array.

The module grounding wire is connected to the bracket, and all inverters must be grounded.
If this drawing is not consistent with the site, it will be adjusted according to the actual situation on site.



LAYOUT PLAN
SCALE 1:100

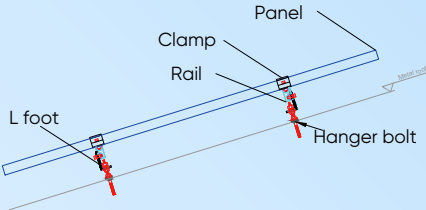


Description:

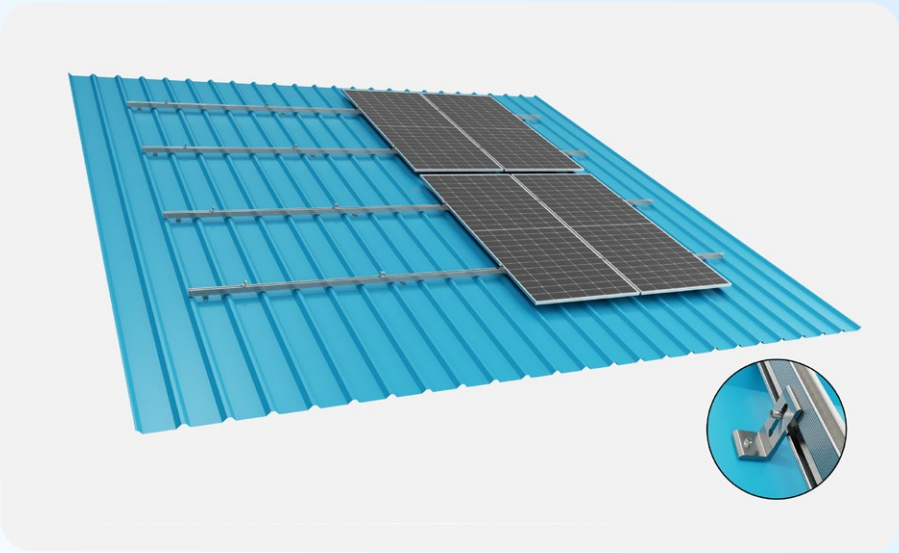
Installation area: Metal roof
Mounting form: Metal roof flat installation
Installation Quantity: 18 pieces

Dual rows of 18 modules in one array.

The module grounding wire is connected to the bracket, and all inverters must be grounded.
If this drawing is not consistent with the site, it will be adjusted according to the actual situation on site.



LAYOUT PLAN
SCALE 1:100



10KW

OFF-GRID
SOLAR SYSTEM

